



FOR KIDS

# A universe fit for children

Facilitation, containment, comfort and esthetics designed for the various stages of the age, growth and daily activities of the child

A paediatric project which grows together with children, developed with clinicians, therapists and families to easily answer to complex needs



# POSTURE FOR PASSION FOR OVER 20 YEARS

PTS e TTS: A complete and groundbreaking approach to the posture



## FULL SUPPORT TO THE PELVIS AND THE TRUNK

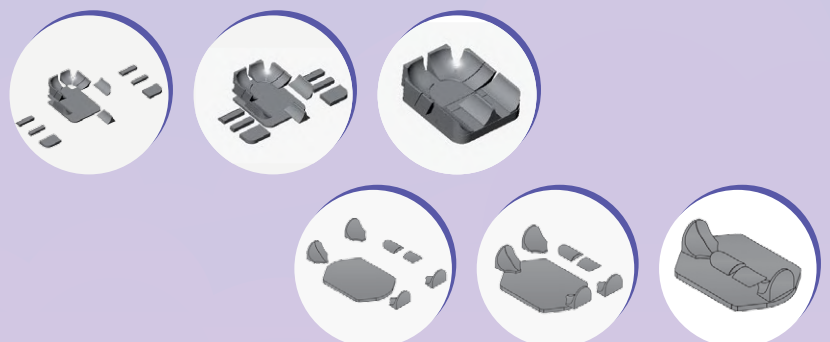
**CONCEPT:** TOTAL SUPPORT of the Femurs / Pelvis / Rachis / Rib Cage relationship system

**METHODOLOGY:** Balancing of the Femurs / Pelvis / Rachis / Rib Cage relationship system, containment and stabilisation of the anatomy, starting from the pelvis and the lumbar spine and along the latero-posterior area of the trunk

### TECHNOLOGY:

- Modular structure composed of a flat base of construction and pre-shaped inserts which can:
  - be positioned in a different and independent way
  - be assembled to fit every shape, morphology and size
  - be modified to follow the child growth and the pathology evolution during the whole life cycle of use

EASY LIKE  
A PUZZLE



- Materials combined and tested for over 15 years, to guarantee the maximum COMFORT, ADHESION, STABILISATION AND FUNCTION

# PELVIS POSITIONING SYSTEMS

STRUCTURE AND MATERIALS TO ALLOW ALIGNMENT, POSTURAL CONTROL, LOADS DISTRIBUTION AND COMFORT

★ **STRUCTURAL KIT** for the individual seating construction, set up and prepared on the user



Different densities combination of polyethylene foam.

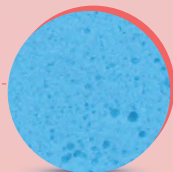
It absorbs the vibrations and provides a slow memory return to deformations. Extremely lightweight and easy to modify by cutter.

★ **Free Shapes PADDING KIT** to ensure a perfect adherence to the structural kit, the body and movements



Flexible elastic expanded polyurethane foam that supports the movement.

Allows air circulation



Flexible open celled visco-elastic polyurethane foam.

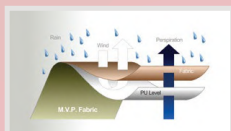
Anti-vibration and shock-absorbing



Anti-decubitus with low spring action polyurethane foam.

Helps in the distribution of pressures and matches the body shape.

★ **"NEW 3D" COVER**



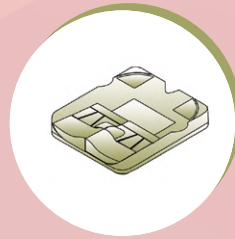
• ELASTIC • INCONTINENT • AIR EXCHANGE • WASHABLE AT 60° C





## BASICO

- ✓ BRAIN INJURIES (EX. CP, TBI)



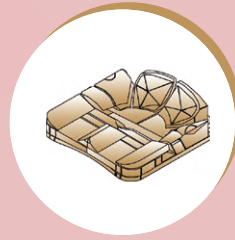
## MODO

- ✓ TRAUMATIC ORIGIN INJURIES AND NOT (EX. PARAPLEGIA, AMPUTATIONS)
- ✓ GENETIC DISEASES (EX. SPINA BIFIDA)



## DOMINO

- ✓ BRAIN INJURIES (EX. CP, TBI)
- ✓ NEUROMUSCULAR AND GENETIC DISEASES (EX. MD, LEUKODISTROPHY, SMA, RETT SYNDROME)



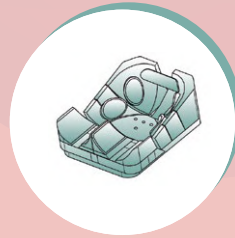
## NOVO

- ✓ TRAUMATIC ORIGIN INJURIES AND NOT (EX. TETRAPLEGIA, AMPUTATIONS)
- ✓ GENETIC DISEASES (EX. SPINA BIFIDA)



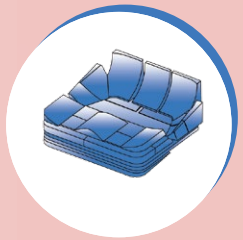
## MEDIANO

- ✓ BRAIN INJURIES (EX. CP, TBI)
- ✓ DEGENERATIVE, NEUROMUSCULAR AND GENETIC DISEASES (EX. SMA, RETT SYNDROME, MD)



## NAUCO

- ✓ TRAUMATIC ORIGIN INJURIES AND NOT (EX. TETRAPLEGIA)
- ✓ NEUROMUSCULAR AND GENETIC DISEASES (EX. MD, LEUKODISTROPHY, SPINA BIFIDA)



## TANTO

- ✓ BRAIN INJURIES (EX. CP, TBI)
- ✓ TRAUMATIC ORIGIN INJURIES AND NOT (EX. SPINAL CORD INJURIES)
- ✓ NEUROMUSCULAR AND GENETIC DISEASES (EX. MD, SPINA BIFIDA, SMA)



## PUCCO

- ✓ BRAIN INJURIES (EX. CP)
- ✓ GENETIC DISEASES (EX. SMA)



## PRATICO

- ✓ BRAIN INJURIES (EX. CP)
- ✓ GENETIC DISEASES (EX. SPINA BIFIDA)
- ✓ TRAUMATIC ORIGIN INJURIES AND NOT (EX. PARAPLEGIA)



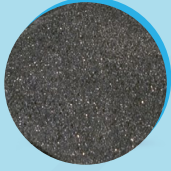
| MODEL       |                         | BASICO       | MODO         | PRATICO  | MEDIANO       | DOMINO        | NAUCO         | NOVO          | TANTO         | PUCCO         |
|-------------|-------------------------|--------------|--------------|----------|---------------|---------------|---------------|---------------|---------------|---------------|
| USER        | SELF PROPELLING ABILITY | YES / NO     | YES          | YES      | NO            | YES / NO      | YES / NO      | YES / NO      | YES / NO      | YES / NO      |
|             | RISK OF PREASSURE LOAD  | AVERAGE/HIGH | AVERAGE      | LOW      | AVERAGE       | HIGH          | HIGH          | HIGH          | HIGH          | HIGH          |
| DEFORMITIES | ALIGNMENT CAPACITY      | LOW          | LOW/MODERATE | LOW      | HIGH          | MODERATE/HIGH | MODERATE/HIGH | MODERATE/HIGH | MODERATE/HIGH | MODERATE/HIGH |
|             | CONTAINMENT CAPACITY    | LOW          | LOW/MODERATE | LOW      | MODERATE      | HIGH          | HIGH          | HIGH          | HIGH          | HIGH          |
| FEATURES    | EASY LATERAL TRANSFERS  | SUITABLE     | SUITABLE     | SUITABLE | LESS SUITABLE | UNSUITABLE    | UNSUITABLE    | SUITABLE      | SUITABLE      | UNSUITABLE    |

These indications have an informative purpose and do not replace the user's complete clinical analysis, his needs in the choice of the positioning solution and the prescription which always remains a prescriber's prerogative

# TRUNK POSITIONING SYSTEMS

STRUCTURE AND MATERIALS TO ALLOW ALIGNMENT, POSTURAL CONTROL, LOADS DISTRIBUTION AND COMFORT

★ **STRUCTURAL KIT** for the individual postural configuration construction, set up and prepared on the user



**Different densities combination of polyethylene foam**

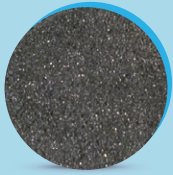
It absorbs the vibrations and provides a slow memory return to deformations. Extremely lightweight and easy to modify by cutter

★ **PADDING** to ensure a perfect adherence to the structural kit, the body and movements



**Flexible elastic expanded polyurethane foam**

Supports the movement and allows air circulation



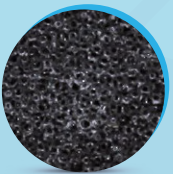
**Self-modeling polymeric foam\***

Dampening low spring back memory foam



**Anti-decubitus with low spring back action polyurethane foam\***

Helps in the distribution of pressures and matches the body shapes



**Reticulated polyurethane foam**

Allows air circulation

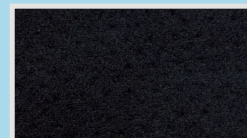


note.\* Present on selected models

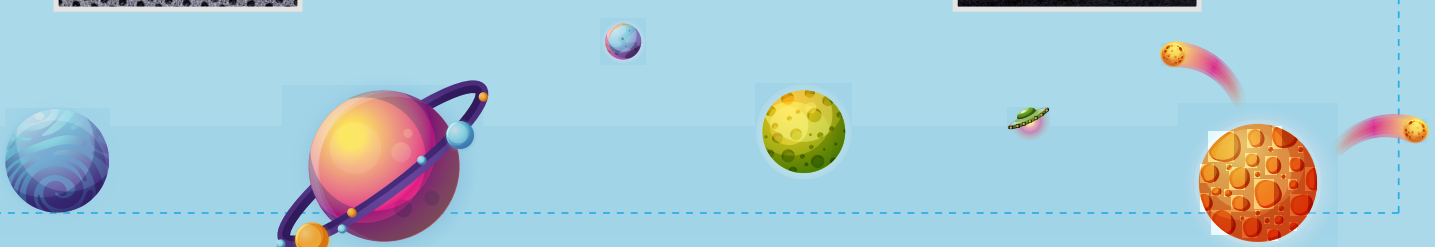
★ **COVER**



**Microclimatic ventilated**  
Facilitate the perspiration



**Elastic Air Exchange**





## FACILE inserto<sub>BACK</sub>

- ✓ TRAUMATIC BRAIN INJURIES AND NOT (EX. PARAPLEGIA, TETRAPLEGIA)
- ✓ BRAIN INJURIES (EX. CP)
- ✓ GENETIC AND NEUROMUSCULAR DISEASES (EX. LEUKODISTROPHY)



## SUPPORTO inserto<sub>BACK</sub>

- ✓ TRAUMATIC ORIGIN INJURIES AND NOT (EX. TETRAPLEGIA)
- ✓ NEUROMUSCULAR AND GENETIC DISEASES (EX. SPINA BIFIDA, SMA, MD, LEUKODITROPHY, RETT SYNDROME)
- ✓ BRAIN INJURIES (EX. TBI, CP)



## CONCO inserto<sub>BACK</sub>

- ✓ NEUROMUSCULAR AND GENETIC DISEASES (EX. SPINA BIFIDA, SMA, MD, LEUKODITROPHY)



## EFFECTO LATO inserto<sub>BACK</sub>

- ✓ NEUROMUSCULAR AND GENETIC DISEASES (EX. SMA, MD, LEUKODITROPHY, RETT SYNDROME)
- ✓ BRAIN INJURIES (EX. TBI, PC)



## EFFECTO PLUS inserto<sub>BACK</sub>

- ✓ NEUROMUSCULAR AND GENETIC DISEASES (EX. SPINA BIFIDA, SMA, MD, LEUKODITROPHY, RETT SYNDROME)
- ✓ BRAIN INJURIES (EX. TBI, PC)

| MODEL       |                             | FACILE         | CONCO          | SUPPORTO          | EFFECTO LATO      | EFFECTO PLUS      |
|-------------|-----------------------------|----------------|----------------|-------------------|-------------------|-------------------|
| USER        | SELF PROPELLING ABILITY     | YES / NO       | YES / NO       | YES / NO          | YES / NO          | YES / NO          |
|             | RISK OF PREASSURE LOAD      | HIGH           | HIGH           | HIGH              | HIGH              | HIGH              |
| DEFORMITIES | ALIGNMENT CAPACITY          | AVERAGE / HIGH | AVERAGE / HIGH | AVERAGE / HIGH    | AVERAGE / HIGH    | AVERAGE / HIGH    |
|             | CONTAINMENT CAPACITY        | AVERAGE / HIGH | HIGH           | HIGH              | HIGH              | HIGH              |
| FEATURES    | ACCESSORIES INTEGRATION     | /              | /              | THORACIC SUPPORTS | THORACIC SUPPORTS | THORACIC SUPPORTS |
|             |                             |                |                | HEADREST          | HEADREST          | HEADREST          |
|             |                             |                |                | HARNESSES         | HARNESSES         | HARNESSES         |
|             | POSTURAL SUPPORT ADJUSTMENT | YES            | YES            | NO                | NO                | NO                |
|             | CRASH TESTED ISO 7176-19    | NO             | NO             | YES               | YES               | YES               |

These indications have an informative purpose and do not replace the user's complete clinical analysis, his needs in the choice of the positioning solution and the prescription which always remains a prescriber's prerogative

# POSITIONING SYSTEM



The Inserto Technology participates in kids life from the EARLY CHILDHOOD...

**ERMES STANDARD CONFIGURATION**



**INSERTO SEAT TECHNOLOGY (PTS)**

- **MIDI SEAT**  
Lateral/anterior pelvic control



- **DEEP SEAT**  
Pelvic total control



COVER colours



Fuchsia



Blue Royal



Wine

**INSERTO BACK TECHNOLOGY (TTS)**

Lateral lumbar contours and lumbar support



**HEADREST**

Multi-adjustable headrest



**THORACIC SUPPORTS**

Swing away thoracic supports



**HIPS/ARMS**

Hips/arms positioning kit  
Multi-adjustable and detachable



PATENT PENDING

ALUMINIUM shells colours



White



Wine



Asymmetrical adjustment



Adduction/abduction adjustment



Wind-swept adjustment



Multi-adjustable foot plates



Height adjustment and reclining backrest

# INTEGRATED POSITIONING SYSTEMS



**ermes giò**  
INTEGRATED POSITIONING SYSTEM



**ermes**  
paediatric positioning system

**POSITIONING SYSTEM**

Paediatric positioning system

+

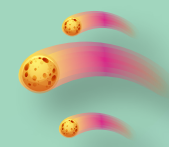
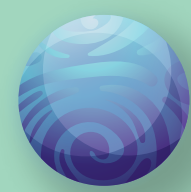
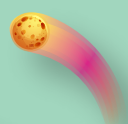
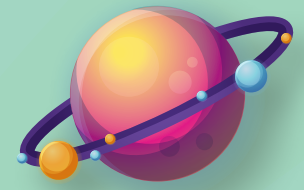


**adacta giò**  
Frame for positioning system

**FRAME**

Outdoor tilt in space frame

OUTSIDE



TILT IN SPACE OF THE FRAME



RECLINING BACKREST



RAIN COVER



**ermes TIPCO**  
INTEGRATED POSITIONING SYSTEM



**ermes**  
paediatric positioning system

**POSITIONING SYSTEM**

Paediatric positioning system

+



**TIPCO**  
indoor frame

**FRAME**

Height adjustable indoor tilting frame

INSIDE



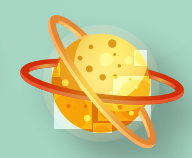
ADJUSTABLE TILT IN SPACE



MULTI-ADJUSTABLE PUSHING HANDLEBAR



ADJUSTABLE HEIGHT







**MODULAR . MODIFIABLE . LIGHTWEIGHT . SAFE . VERSATILE**

**Guide to the choice of the Postural Equipment**



# TILT IN SPACE FRAMES FOR POSITIONING SYSTEMS



**adacta**<sup>gio</sup> LIGHTWEIGHT, COLOURED,  
EASY TO HANDLE AND VERSATILE,  
PARTECIPATING IN CHILD GROWTH AND LIFESTYLE



**adacta**<sup>leo</sup> SAFE AND RESISTANT WITH  
CONTINUOUS RECLINING AND TILT IN SPACE  
FOR USERS WITH SERIOUS JOINTS RESTRICTIONS



**adacta**<sup>klim</sup> HIGHLY RESISTANT,  
TOTALLY MODULAR,  
DESIGNED FOR USERS AFFECTED  
BY MOVEMENT DISORDERS IN HYPERTONIC DYSKINESIA,  
IT ABSORBS AND FOLLOWS THE MOVEMENTS

STUDY AWARDED AT 2013 EDITION OF



# HEAD SUPPORT SYSTEMS

|             |   |  |   |   |   |
|-------------|---|--|---|---|---|
| <b>PADS</b> |  |  |  |   |   |
|             | SMALL Pad<br>PMD04P   | MEDIUM Pad<br>PMD04M   | LARGE Pad<br>PMD04G   |   |   |
|             |  |   |   |  |  |
|             | Anti-decubitus padding  | Removable cover lycra/neoprene air-x-change  | Breathable  | Fire retardant  | Multi-adjustable and pivoting   |

|             |   |   |   |   |   |
|-------------|---|---|---|---|---|
| <b>PADS</b> |  |  |  |  |   |
|             | EXTRA SMALL Pad<br>PMD03XP  | SMALL Pad<br>PMD03P   | MEDIUM Pad<br>PMD03M  | LARGE Pad<br>PMD03G   |   |
|             |  |  |   |  |  |
|             | Low Profile and Soft padding  | Removable cover lycra/neoprene air-x-change                                       | Breathable  | Fire retardant  | Multi-adjustable and pivoting   |

# FASTENERS

## PELVIS

|  |  |   |   |
|--|--|---|---|
|     |                             |  |  |
| PELVIC BELT<br>• 2 fixing points<br>• 2 adjustments<br>• Metal<br>front button release | PELVIC BELT<br>• 4 fixing points<br>• 2 adjustments<br>• Metal<br>front button release with new protective pad | PELVIC BELT<br>• 2 fixing points<br>• 2 adjustments<br>• Plastic side squeeze buckle  | ABDUCTION DYNAMIC HARNESS   |

## LEGS

|   |  |
|---|--|
|  | MIDFOOT STRAP PADDED WITH HOOK AND LOOP FIXING |
|---|--|

## TRUNK - SHOULDERS

|   |  |   |
|---|--|---|
|  |  |  |
| CHEST HARNESS<br>with shoulders retraction pads                                     | TRUNK HARNESS<br>with elastic shoulders retractors and chest buckle closure          | DYNAMIC BUTTERFLY HARNESS   |

Ask for further information about the solutions  
and researches published by Pro Medicare to  
the e-mail address [info@promedicare.it](mailto:info@promedicare.it)

MANUFACTURED AND DISTRIBUTED BY



Pro Medicare srl

Via A. Montagna - Z.I. - Lotto 41

72023 Mesagne (BR) - Italy

tel. (+39) 0831 77 78 40

fax (+39) 0831 73 07 39

[info@promedicare.it](mailto:info@promedicare.it)

[www.promedicare.eu](http://www.promedicare.eu)

CERTIFIED COMPANY WITH QUALITY  
MANAGEMENT SYSTEM ISO 9001 / EN ISO 13485  
N° 279412 / N° 279411



ISO 9001

ISO 13485

BUREAU VERITAS  
Certification

